

FAULT-RESILIENT DESIGN


FLEXIBLE CONFIGURATION

MULTIPLE INPUT OPTIONS

VIDEOWALL MANAGEMENT SOFTWARE

SOFT-EDGE BLENDING

SYSTEM INTEGRATION



“NEXUS DCx VIDEOWALL CONTROLLERS ARE UNPRECEDENTED  
IN FEATURES, FLEXIBILITY AND PRICE. OUR ATTENTION TO QUALITY  
ENSURES UNINTERRUPTED OPERATION FOR YOUR VIDEOWALL.”

### FAULT-RESILIENT DESIGN

Some sites just cannot afford unexpected down time. Redundancies in DCx minimises single point failures. Hot-swappable parts let you keep running even when parts are being replaced. nViroGard continuously monitors the videowall environment for possible problems, so measures can be taken before a fault is evident.

### FLEXIBLE CONFIGURATION

Each site is unique. The DCx has a wide range of configurations and options to suit your needs exactly. Pay only for what you want, not what others think you may want.

### INPUT OPTIONS

Display a wide variety of external sources on your videowall: HDMI, DVI, RGB, Component, S-Video, composite video, streaming video and VNC.

### VIDEOWALL MANAGEMENT

Your videowall has special needs, and we understand them. Every DCx is bundled with Enabler, our very own videowall management software.

### SOFT-EDGE BLENDING

DCx, and projectors with gamma correction. That's all you need! DCx can be configured to have overlap for soft-edge blending, or even gaps for flat panels, like LCD or plasma screens.

### SYSTEM INTEGRATION

The videowall is just one of the many components in a control room: proper integration is critical for reliable and efficient control room operations. DCx is designed to be a team player in your control room.

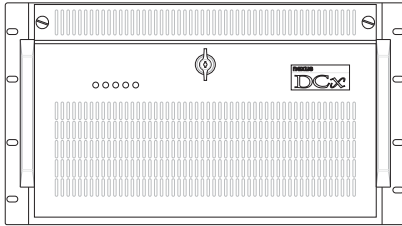
**DCx***lite*


**Entry Level**  
This model uses a desktop motherboard. It is suitable for smaller videowalls with basic input requirements.



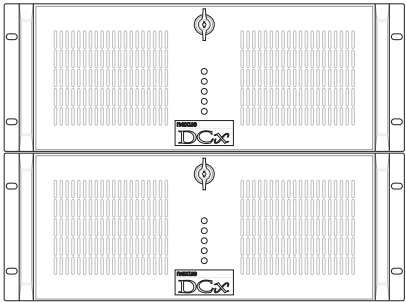
**DCx**PRO

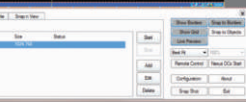
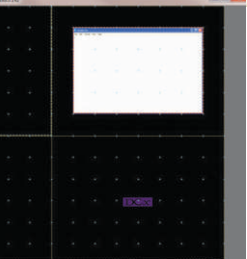
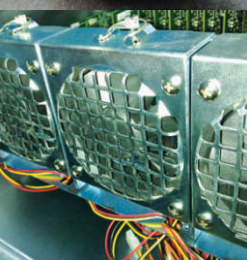
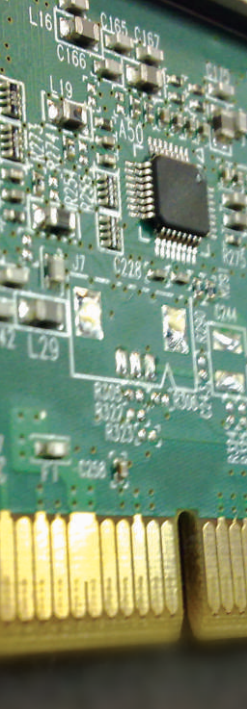
**Workhorse**  
This model is based on an industrial backplane and SBC. It is ideal for a system where a lot of heavy processing needs to be done on the PCI cards.





**Powerhouse**  
This model uses a server motherboard and expansion backplanes. It has the power to run the most demanding applications, and the capacity to accommodate a large number of cards.





PERFORMANCE	<b>Dedicated hardware</b>	CPU overhead is reduced by off-loading processor intensive tasks to dedicated hardware, like streaming video decoder, RGB capture ADC, RAID controller and environmental monitor.
	<b>PCI-Express</b>	Data transfer is via DMA on PCIe slots, running on a switched-fabric.
	<b>Intel Xeon</b>	Powered by Intel's industry leading Xeon processors.
RELIABILITY	<b>Redundant Power</b>	Redundant power supply with hotswap modules.
	<b>RAID Storage</b>	System independent RAID1 with hotswap trays and auto-rebuild capability.
	<b>ECC RAM</b>	Automatically corrects single bit errors, and detects multi-bit errors in system memory.
	<b>Redundant Ethernet</b>	Port aggregated Gigabit Ethernet for load balancing and auto-failover.
	<b>Redundant Fans</b>	Hotswap redundant cooling fans for proper ventilation and circulation.
FLEXIBILITY	<b>Input Options</b>	Capture and display multiple inputs of a large variety of sources, be it analogue, digital or over Ethernet.
	<b>Overlap / Gap</b>	Configure overlaps for soft-edge blended installations, or gaps for displays with bezels.
	<b>Integration</b>	Third party integrators can easily control the videowall with simple CLI or a sophisticated API.
CONVENIENCE	<b>Sliding Rails</b>	High quality rails with steel bearings ensures a smooth and stable slide to ease maintenance.
	<b>Physical Locks</b>	Physical lock and key on front panel.
	<b>Washable Filter</b>	Washable sponge air-filters make it easy to maintain a good supply of clean air.
MONITORING	<b>nViroGard</b>	Independent environmental monitor with multiple monitoring points.
	<b>nViroGard GUI</b>	Windows-based application for configuring, monitoring and reviewing.
	<b>nViroGard SMS</b>	If the user-configured threshold is breached, SMS alerts can be sent out independently of the servers and LAN.
SOFTWARE FEATURES	<b>Live Mimic</b>	Monitor and manage your videowall and controller from your workstation.
	<b>Message</b>	Display static or scrolling messages on the videowall.
	<b>Pre-sets</b>	Pre-set any commonly used windows.
	<b>Preview</b>	Preview your capture on your workstation monitor before displaying to the videowall.
	<b>Scheduler</b>	Schedule any pre-sets to execute at a pre-determined time and frequency.
	<b>SnapShot</b>	Take a snapshot of the whole videowall for incident tracking or playback.
	<b>User account</b>	Multiple user accounts with different access levels.

## SYSTEM

### Chassis

4U industrial 19" rackmount chassis,  
heavy duty steel, cold-rolled and electroplated.

### Processor

up to Dual 32nm Intel QuadCore Xeon  
with QPI bandwidth of up to 6.4GT/s or 51.2GB/s

### Bus

switch fabric of up to a peak of 192Gb/s

### Memory

up to 192GB ECC Registered DDR3

### OS

Microsoft Windows XP / 7 / 2003 Server

### Storage

up to 2TB primary volume

### Ethernet

port aggregated up to 8Gb/s

## OUTPUT

### Ports

up to 64 output channels

### Resolution

up to QuadXGA (2048 x 1536) 32bpp

### Interface

Composite, S-Video, Component, VGA, DVI

### Memory

128MB of frame buffer per channel

### Transfer rate

720MB/s DMA

### Vertical Sync

Fully synchronised with GenLock

## VIDEO CAPTURE

### Ports

up to 1024 inputs

### Memory

up to 256MB of overlay memory per card

### Resolution

up to 1920 x 1080

### Interface

Composite, S-Video, Component or HD

### Format

PAL, NTSC, SECAM, HD

### Transfer rate

5Gb/s bus on dedicated cable

### Display

No size or position restrictions

## RGB CAPTURE

### Ports

up to 64

### Memory

up to 64MB triple buffered

### Resolution

up to QXGA (2048 x 1536) 24bpp

### Interface

RGB, DVI-I, HDMI (HDCP not supported), Component

### Transfer rate

up to 3840 Mbps on DMA

### Display

No size or position restrictions

### Sampling rate

Up to 340 pixel clock

## STREAMING VIDEO

### Decoder

Dedicated processor on each decoder card

### Streams

up to 16 decoder cards, each decoding  
32 QCIF or 8 D1 streams in parallel

### Codec

MPEG-1, MPEG-2, MPEG-4, MJPEGm H.264

### Resolution support

Megapixel, D1, 4CIF, VGA, QCIF

### Camera support

ACTi, AXIS, Bosch, Comerson, Canon,  
Mobotix, Optelecom-NKF, Panasonic,  
Sony, Truen, Vivotek

### Encoder support

ATEME, Dallmeier, IndigoVision, LanAccess, Mavix,  
Siemens, Synectics, Teracue, VBrick

### Ethernet

Dual Gigabit ports

## OPTIONS

### Power Supply

Redundant, hot-swap

### RAID1

Hot-swap, hardware controller, auto-rebuild

### Monitoring

nViroGard monitors 8 temperature points,  
6 fans, 6 voltages and 6 contact closures.  
Windows GUI is included, and SMS alert is optional.

### Rails

Steel sliding rails with bearings

### Switcher

Integrated PCI based matrix switcher for video inputs

A product of Nexus Laboratories Sdn Bhd (771403-X)

Marketed by Hitecindo Kharisma Sdn Bhd (87091-M)



Unit 708 Block F  
Phileo Damansara Business Centre 1  
No. 9 Jalan 16/11 off Jalan Damansara  
46350 Petaling Jaya  
Selangor Darul Ehsan  
MALAYSIA  
T. 603 7660 9050  
F. 603 7660 9055  
email [sales@hika.com](mailto:sales@hika.com)  
web. [www.hika.com](http://www.hika.com)

We are always working on improving our products, so these specifications may change without notice. Pictures are for illustration purposes only, and this brochure should not be used for configuring a Dcx. Your Videowall is unique: please talk to us so we can configure a DCx for your specific needs.

Microsoft Windows and the Microsoft Certified Partner Logo are registered trademarks of Microsoft Corporation in the United States and/or other countries.

Updated March 2011